

## ACCESSORIES

|         |  |
|---------|--|
| MA9015  | Storage solution (230ml)                     |
| MA9016  | General cleaning solution (230ml)            |
| MA9300  | 1.5 battery (10 pcs.)                        |
| MA9701  | Calibration Screwdrivers (20pcs)             |
| M10000B | Rinse solution 20mL sachet (25pcs.)          |
| M10004B | pH 4.01 20mL sachet buffer solution (25pcs.) |
| M10007B | pH 7.01 20mL sachet buffer solution (25pcs.) |
| M10010B | pH10.01 20mL sachet buffer solution (25pcs.) |

## CERTIFICATION

Milwaukee Instruments conform to the CE European Directives.



**Disposal of Electrical & Electronic Equipment.** Do not treat this product as household waste. Hand it over to the appropriate collection point for the recycling of electrical and electronic equipment.

RoHS compliant



**Disposal of waste batteries.** This product contains batteries. Do not dispose of them with other household waste. Hand them over to the appropriate collection point for recycling.

Please note: proper product and battery disposal prevents potential negative consequences for human health and the environment. For detailed information, contact your local household waste disposal service or go to [www.milwaukeeinstruments.com](http://www.milwaukeeinstruments.com) (USA & CAN) or [www.milwaukeeinst.com](http://www.milwaukeeinst.com).

## RECOMMENDATION

Before using this product, make sure it is entirely suitable for your specific application and for the environment in which it is used. Any modification introduced by the user to the supplied equipment may compromise the meter's performance. For your and the meter's safety do not use or store the meter in hazardous environment. To avoid damage or burn, do not perform any measurement in microwave ovens.

## WARRANTY

This instrument is warranted against defects in materials and manufacturing for a period of 2 years from the date of purchase. Probe is warranted for 6 months This warranty is limited to repair or free of charge replacement if the instrument cannot be repaired. Damage due to accidents, misuse, tampering or lack of prescribed maintenance is not covered by warranty. If service is required, contact your local Milwaukee Instruments Technical Service. If the repair is not covered by the warranty, you will be notified of the charges incurred. When shipping any meter, make sure it is properly packaged for complete protection.

Milwaukee Instruments reserves the right to make improvements in design, construction and appearance of its products without advance notice.

# USER MANUAL

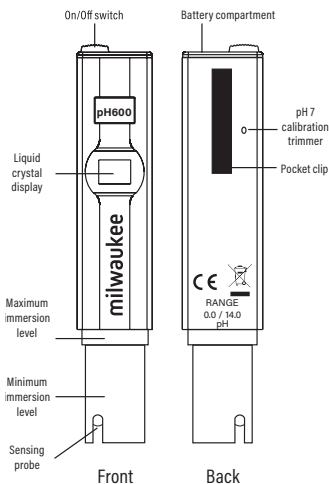
## pH600 Digital pH Pen



Distributor in Australia  
Pacific Sensor Technologies Pty Ltd

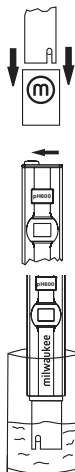
Unit 4, 3 Neutron Place Rowville, VIC 3178 Australia  
1300 662 720 | [sales@pacificsensortech.com.au](mailto:sales@pacificsensortech.com.au)  
[www.pacificsensortech.com.au](http://www.pacificsensortech.com.au)





## OPERATING:

- Do not be alarmed if white crystals appear around the cap. This is normal with pH electrodes and they dissolve when rinsed with water.



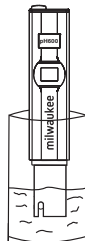
- Remove the protective cap and turn the **pH600** on.
- Immerse it into solution up to the maximum immersion level.
- Stir gently and wait until the display stabilizes.
- After use, rinse the electrode with water to minimize contamination.
- Store the electrode with a few drops of storage solution (**MA9015**) in the protective cap.
- Always replace the protective cap after use.

DO NOT USE DISTILLED OR DEIONIZED WATER FOR STORAGE PURPOSES.

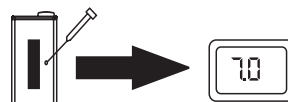
- Large differences in pH readings (e.g.  $\pm 0.5$  pH) could be due to lack of calibration, dry electrode or rundown batteries.

## CALIBRATION:

The calibration procedure is very simple and fast.



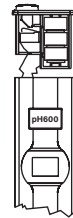
- Immerse the tester up to the maximum level in pH 7.01 buffer (**M10007B**).
- Allow the reading to stabilize and using a small screwdriver turn the pH 7 Calibration Trimmer to read 7.0



Calibration is now complete. ALWAYS USE FRESH BUFFER FOR CALIBRATION & NEVER REUSE THEM

## BATTERY REPLACEMENT:

When the **pH600** cannot be switched on or the display fades, pullout the battery compartment and replace all three 1.5V batteries, paying attention to their polarity. Batteries should only be replaced in a non-hazardous area using the battery types specified in this instruction manual.



## SPECIFICATIONS:

|                              |                                 |
|------------------------------|---------------------------------|
| <b>RANGE</b>                 | 0.0 to 14.0 pH                  |
| <b>RESOLUTION</b>            | 0.1 pH                          |
| <b>ACCURACY (@20°C)</b>      | $\pm 0.1$ pH                    |
| <b>TYPICAL EMC DEVIATION</b> | $\pm 0.2$ pH                    |
| <b>ENVIRONMENT</b>           | 5 to 50°C 95% RH                |
| <b>BATTERY TYPE</b>          | 3x1.5V alkaline                 |
| <b>BATTERY LIFE</b>          | approx. up to 700 hours of use. |
| <b>DIMENSIONS</b>            | 150x30x24 mm                    |
| <b>WEIGHT</b>                | 85g                             |